

# DORNBACK

## COMMERCIAL & LARGE RESIDENTIAL GAS & OIL FIRED FURNACES

### A MODEL FOR EVERY SIZE AND APPLICATION

#### *Features:*

##### **DRAFT-O-STAT -**

*"The World's Finest Draft Control".*

##### **HEAT EXCHANGER -**

*Heavy Gauge Steel one piece, seamless, permanently gas tight. Center of combustion chamber is lined with pyro ceramic to further insure long life.*

##### **COMBUSTION CHAMBER -**

*Pyro-ceramic is one piece, factory installed molded unit.*

*Warm-up is practically instantaneous.*

##### **HIGH EFFICIENCY FLAME RETENTION BURNER -**

*Gives the most efficiency...quietly, and uses less fuel.*

##### **CONVERTS EASILY TO COOLING**

All of the furnaces shown here are easily adapted for use as summer air-conditioning units. Simply add a cooling package to an existing gas or oil-fired warm air furnace. All air-conditioners are air cooled and require no water source. Complete range of models and sizes are available.



##### **HIGHBOY SERIES**

Available for either residential, commercial or light industrial use. Input sizes from 70,000 to 1,000,000 BTU/Hr. These compact highboy models will fit into utility rooms, basements or right on a factory floor. Standard models are equipped with front flues; rear flues are available on special order. Two stage firing is available on 700,000 and 1,000,000 BTU models.



##### **COUNTERFLOW SERIES**

The Counterflow model is specifically designed for use in concrete slab buildings or those with crawl space areas using perimeter or radial type systems. Non-combustible base available for installation on wood floors. Available from 90,000 to 1,000,000 BTU/Hr. Standard models are equipped with front flues; rear flues available on special order. Two stage firing is available on 700,000 and 1,000,000 BTU models.

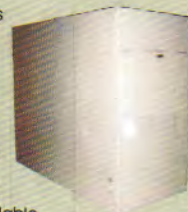
##### **HORIZONTAL SERIES**

Especially designed for convenient installation in garages, attics or crawl space installations in homes, stores, service stations, factories and warehouses. No furnace or utility room needed. Hanger channels, filters and 2-stage pump are optional. Two stage firing is available on 700,000 and 1,000,000 BTU models.



##### **LOWBOY SERIES**

Designed for buildings or homes with basements. Heat exchangers are heavy gauge, cylindrical designed steel. Standard models are equipped with rear flue. Front flue models available on special order. Available from 90,000 to 1,000,000 BTU/Hr. Two stage firing is available on 700,000 and 1,000,000 BTU models.



**AHRI** CERTIFIED™  
www.ahridirectory.org

Commercial Furnaces  
DOE 10 CFR Part 431

ETL  
Intertek  
4004374

ETL LISTED  
**CONFORMS TO  
UL STD 727  
CERTIFIED TO  
CAN/CSA STD B140.4**



# SPECIFICATIONS

## ACOV HIGHBOY

Model Number	BTU/Hr. Input	BTU/Hr. Output	CFM @ .20	MTR. H.P.	CFM @ .50 ESP COOL	MTR. H.P.	FLUE DIA.
ACOV175	175,000	140,000	1400	1/2	2000	3/4	6"
ACOV230	230,000	184,000	1800	3/4	2100	1	8"
ACOV350	350,000	280,000	2600	1	3000	1-1/2	9"
ACOV500	500,000	400,000	4000	2	4200	2	12"
ACOV700	700,000	560,000	5200	(2) 1	6000	(2) 1-1/2	(2) 9"
ACOV1000	1,000,00	800,000	8000	(2) 2	8400	(2) 2	(2)

Standard models are equipped with front flue, rear flues are available.

## ACO LOWBOY

ACO175	175,000	140,000	1400	1/2	2000	3/4	6"
ACO230	230,000	184,000	1800	3/4	2100	1	8"
ACO350	350,000	280,000	2600	1	3000	1-1/2	9"
ACO500	500,000	400,000	4000	2	4200	2	12"
ACO700	700,000	560,000	5200	(2) 1	6000	(2) 1-1/2	(2) 9"
ACO1000	1,000,00	800,000	8000	(2) 2	8400	(2) 2	(2)

Standard models are equipped with rear flue, front flues are available.

## OCF COUNTER FLOW

OCF175	175,000	140,000	1400	1/2	2000	3/4	6"
OCF230	230,000	184,000	1800	3/4	2100	1	8"
OCF350	350,000	280,000	2600	1	3000	1-1/2	9"
OCF500	500,000	400,000	4000	2	4200	2	12"
OCF700	700,000	560,000	5200	(2) 1	6000	(2) 1-1/2	(2) 9"
OCF1000	1,000,00	800,000	8000	(2) 2	8400	(2) 2	(2)

Standard models are equipped with front flue, rear flues are available.

## SO HORIZONTAL

SO175	175,000	140,000	1400	1/2	2000	3/4	6"
SO230	230,000	184,000	1800	3/4	2100	1	8"
SO350	350,000	280,000	2600	1	3000	1-1/2	9"
SO500	500,000	400,000	4000	2	4200	2	12"
SO700	700,000	560,000	5200	(2) 1	6000	(2) 1-1/2	(2) 9"
SO1000	1,000,00	800,000	8000	(2) 2	8400	(2) 2	(2)

Standard models are equipped with front flue, rear flues are available.

# DORNBACH

FURNACE DIVISION

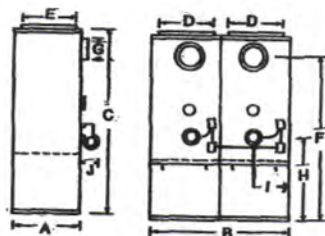
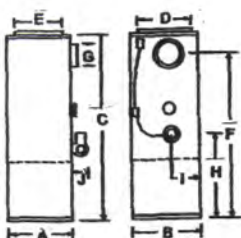
9545 Granger Rd. • Garfield Hts, Ohio 44125

(216) 662-1600  
RSMLS@att.net

Available from:

www.dornbachfurnace.com

# DIMENSIONS

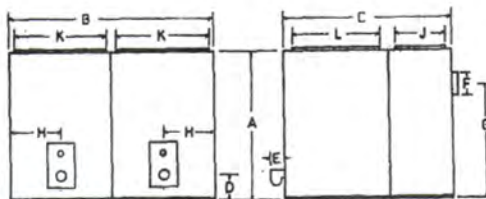
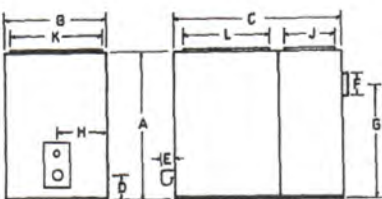


ACOV175 - ACOV500

## HIGHBOY

ACOV700 - ACOV1000

Model	A	B	C	D	E	F	G	H	I	J
ACOV175	27"	27"	72"	22"	22"	56"	6"	30"	13.5"	8"
ACOV230	30"	30"	76"	26"	26"	63"	8"	36"	15"	10"
ACOV350	36"	36"	76"	34"	34"	69"	9"	35"	18"	10"
ACOV500	42"	42"	96"	38"	38"	86"	12"	46"	21"	10"
ACOV700	36"	72"	76"	34"	34"	69"	9"	35"	18"	10"
ACOV1000	42"	84"	96"	38"	38"	86"	12"	46"	21"	10"



ACO175 - ACO500

## LOWBOY

ACO700 - ACO1000

Model	A	B	C	D	E	F	G	H	J	K	L
ACO175	48"	27"	59"	8"	*	8"	33"	13.5"	16"	22"	22"
ACO230	52"	29"	63"	9"	*	8"	45"	15"	19"	24"	24"
ACO350	53"	36"	61"	11"	8.5"	9"	37"	18"	13"	34"	34"
ACO500	65"	42"	72"	12.5"	8.5"	12"	54"	22"	13"	38"	38"
ACO700	53"	72"	63"	11"	8.5"	9"	37"	18"	13"	34"	34"
ACO1000	65"	85"	72"	12.5"	8.5"	12"	54"	22"	13"	38"	38"

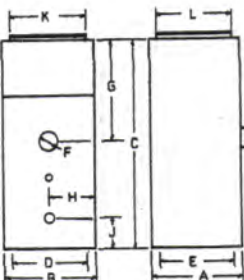
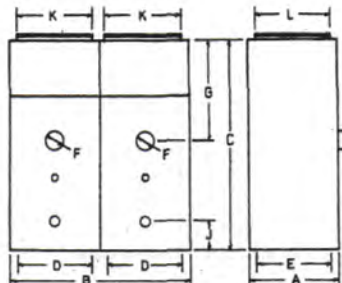
\*Burner enclosed in furnace housing 175 & 230 models only.

**DORNBACH**  
FURNACE DIVISION

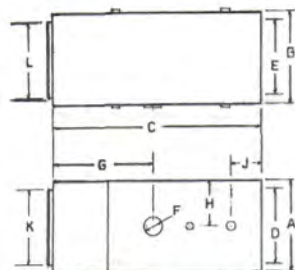
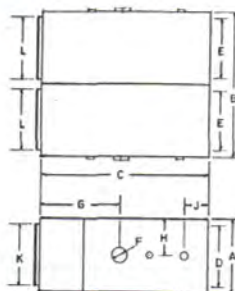
www.dornbachfurnace.com

9545 Granger Rd. • Garfield Hts, Ohio 44125

(216) 662-1600

**DIMENSIONS****OCF175 - OCF500****COUNTERFLOW****OCF700 - OCF1000**

Model	A	B	C	D	E	F	G	H	J	K	L
OCF175	27"	27"	72"	22"	22"	6"	30"	13.5"	9"	20"	25"
OCF230	30"	30"	76"	26"	26"	8"	38"	15"	13"	32"	25"
OCF350	36"	36"	76"	34"	34"	9"	30"	18"	13"	32"	32"
OCF500	42"	42"	96"	38"	38"	12"	46"	21"	13"	40"	40"
OCF700	36"	72"	76"	34"	34"	9"	30"	18"	13"	32"	32"
OCF1000	42"	84"	96"	38"	38"	12"	46"	21"	13"	40"	40"

**SO175 - SO500****HORIZONTAL****SO700 - SO1000**

Model	A	B	C	D	E	F	G	H	J	K	L
SO175	27"	27"	72"	22"	22"	6"	30"	13.5"	9"	20"	25"
SO230	30"	30"	76"	26"	26"	8"	38"	15"	13"	32"	25"
SO350	36"	36"	76"	34"	34"	9"	30"	18"	13"	32"	32"
SO500	42"	42"	96"	38"	38"	12"	46"	21"	13"	40"	40"
SO700	36"	72"	76"	34"	34"	9"	30"	18"	13"	32"	32"
SO1000	42"	84"	96"	38"	38"	12"	46"	21"	13"	40"	40"

**DORNBACH**  
FURNACE DIVISION

9545 Granger Rd. • Garfield Hts, Ohio 44125

[www.dornbachfurnace.com](http://www.dornbachfurnace.com)

(216) 662-1600