

FUEL SAVING!

DORNBACK **GRAVITY GAS FURNACES**

maximum efficiency...at low operating costs!

- modern
- dependable
- service free

...available in three
popular sizes;
90,000
105,000 and
120,000 BTU input

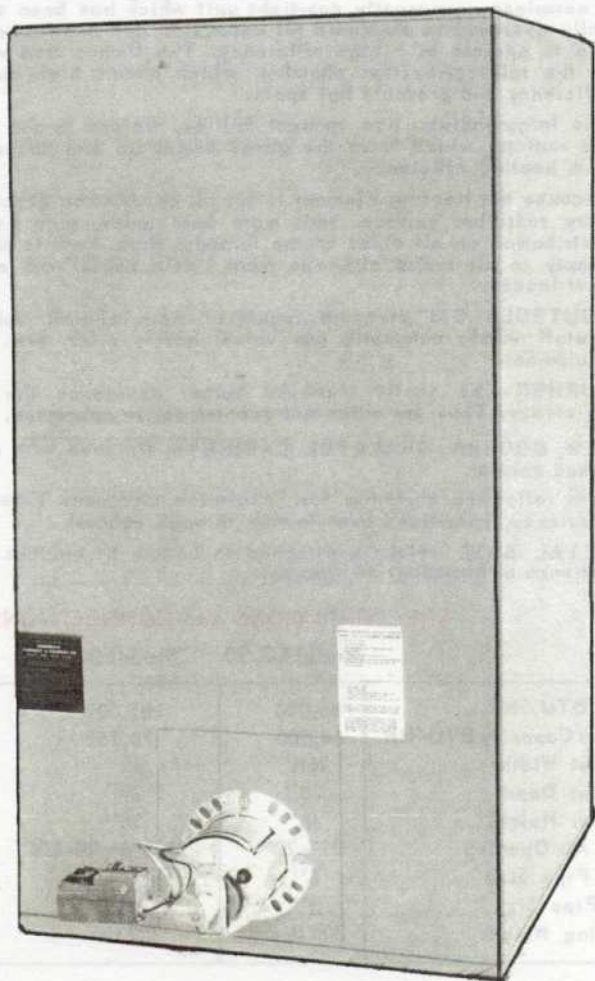
Gas fired gravity furnaces

... are the standard of the industry.
Tops in thermal efficiency. With this
modern furnace you are assured of
a lifetime of comfortable living in
a well heated home featuring top
quality at low cost.

EXCLUSIVE DORNBACK FEATURES:

- No moving parts
- Quiet operation
- Constant even heat
- No outside source of electricity required
- 10 year heat exchanger warranty
- Efficient, single port spreader type burner
- Heavy gauge steel heat exchanger
- Beautiful baked enamel finish
- Units are completely assembled
- Low initial cost
- Low operating cost
- Fiberglass insulated
- Millivolt self-generating controls
- Approved for use with Natural gas
- For new homes or replacement furnaces
- Pre-fab plenums available

DORNBACK has over 80 years experience in
designing and manufacturing furnaces for your
home or place of business . . .



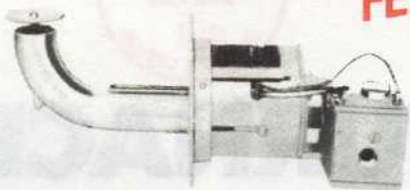
FURNACE DIVISION

9545 Granger Road • Garfield Heights, Ohio 44125

(216) 662-1600 • Fax (216) 587-6807

SG-88

DORNBACH "UPSHOT" BURNER EXCLUSIVE FEATURES!



- Fully equipped with self-generating controls
- Rugged cast iron venturi for increased stability
- Push button spark ignition standard equipment
- Readily removable pilot and flame spreader
- Compact design and completely factory assembled

The DORNBACH Gas Gravity unit is equipped with the Famous DORNBACH Mono - Port Upshot Burner and is designed to achieve maximum efficiency in these furnaces. The burner venturi is still made of durable cast iron and are equipped with the latest type of controls, self generating, type, and has a stainless steel flame spreader.

This furnace is operational, even during a power failure. The SG series gravity gas furnace does not depend on an outside source of electricity.

If your Gas Gravity Furnace is properly installed ...it can be the best and most economical heating system in the world.

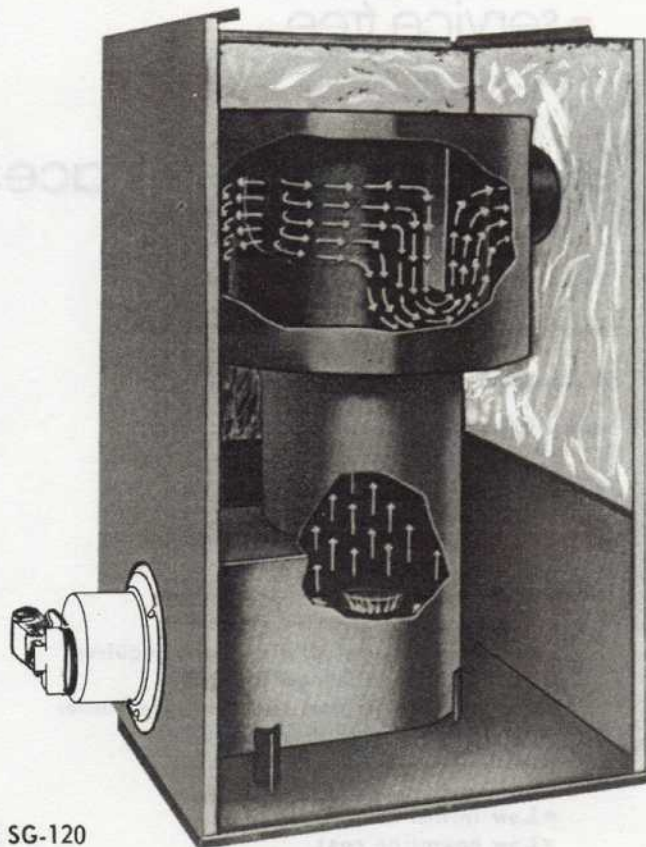
DISTINCTIVE FEATURES

- The elements are built of durable heavy gauge steel, welded into a seamless permanently gas-tight unit which has been scientifically designed to eliminate all expansion and contraction noises and to operate at a high efficiency. The flames rise vertically in the tall combustion chamber, which means high combustion efficiency and prevents hot spots.

The large radiator has vertical baffles, welded to the inside of the radiator which force the gases downward and assures maximum heating efficiency.

Because the Heating Element is round, combustion gases contact more radiation surface, emit more heat units, give equal heat distribution on all sides of the furnace; thus, heat is distributed evenly to all rooms alike—no more "cold spots"—no excessive heat losses.

- **CONTROLS**—Gas pressure regulator—main shutoff valve—pilot shutoff valve, automatic gas valve, safety pilot, are standard equipment..
- **BURNER**—The vastly improved burner develops the highest efficiency. They are quiet and economical in operation.
- **NEW, MODERN, GRACEFUL CABINETS**, finished with beautiful baked enamel.
- Heat reflecting aluminum foil insulation increases capacity and efficiency, minimizes heat losses through cabinet.
- **METAL BASE** which is attached to bottom of cabinet prevents entrance of basement air into unit.



SPECIFICATIONS and CONNECTIONS

Model SG-90 Model SG-105 Model SG-120

Input BTU / HR.	86,000	105,000	120,000
Bonnet Capacity BTU/HR.	64,500	78,750	90,000
Cabinet Width	26½"	29"	29"
Cabinet Depth	28"	29"	29"
Cabinet Height	48"	54"	54"
Warm Air Opening	22 x 22"	28-3/8 x 28-3/8"	28-3/8 x 28-3/8"
Flue Pipe Size	6"	6"	6"
Gas Pipe Size	½"	½"	½"
Shipping Weight	200 lbs.	220 lbs.	275 lbs.

These models are approved for use with Natural gas.

All models are factory assembled and shipped in two cartons.

Self generating controls are standard equipment on gas gravity units.

Gravity furnaces are approved for installation on non-combustible floors only.

CLEARANCES

Allow 12" clearance between furnace sides and adjacent combustible building structure.

Allow 12" clearance between protecting draft hood at rear of furnace and adjacent combustible building structure.

Allow a minimum of 18" in front of the furnace for easy access.



DISTRIBUTED BY